



# Tall Locking 4 Drawer Cart Series



## Maximum storage with the security of a lock

The Tall Locking 4 Drawer Cart maximizes your tight spaces through its use of vertical space. The tray style top and smooth mobility protect your supplies when you are on the move. The lock provides security when the cart is not in use.

## COMPACT FOOTPRINT

- The narrow profile lets you maneuver through tight spaces easily and quickly tucks into a corner when not in use.

## FLEXIBLE FOR VARIOUS USES

- Utilize our customized drawer organizers (offered on the next page) to make this your space-saving and time-saving tool for labs, hospitals, clinics, dental and veterinary offices.

## EASY MANEUVERING

- Four premium 4" casters (2 locking, 2 swivel) glide over thresholds and into patient rooms with ease.
- Built-in handle gives you command at every turn.

## SECURE, SAFE, IMMEDIATE ACCESS

- Two keys provide ability for multiple users to share the cart.
- One key locks all four drawers for instant security.

## LIFETIME GUARANTEE

- Work stress-free, knowing your cart is covered for life.



### Twin-Wheel Casters

- Smooth and easy to move over thresholds.
- Lockable.



### Flexible Open Storage

- Space under drawers is open for easy access



### Tray Style Top

- Protects your most-used supplies from falling.



### Easy-Grab Handle

- Ergonomic, lightweight, and easy to maneuver.



10991 N Airworld Drive, Kansas City, MO, USA | 1 (800) 874-7768 | Sales@TrippNT.com

# Tall Locking 4 Drawer Cart Series

## DRAWERS AND OPEN STORAGE

- 4 drawers 11 1/2" x 15 3/8" x 3 3/8" (WDH)
- Open storage at the bottom
- Durable ACP interior with HDPE front

## LOCKING MECHANISM

- 1 key locks all 4 drawers
- 2 keys allow multiple users

## NARROW SLEEK DESIGN

- Maximum use of vertical space
- Small footprint - tucks away in a corner

## ASK ABOUT OUR DEMO PROGRAM

[Try it out at your facility.](#)



Corrosion Resistant



Short Lead Times



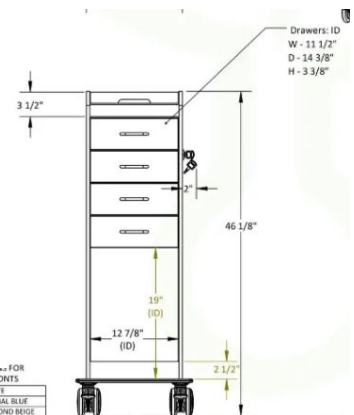
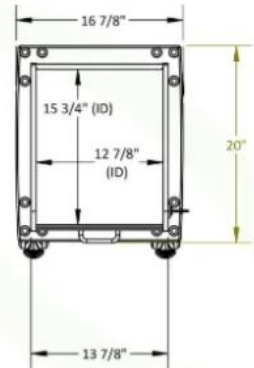
Ships Assembled



Made in the U.S.A



100% Lifetime Guarantee



## COLOR OPTIONS



White  
53575



Global Blue  
53582



Almond Beige  
53583



Silver Metallic  
53584



Black  
53585



Dolphin Gray  
53586

## ACCESSORIES



PN: 50917  
4 Compartment



PN: 50974  
6 Compartment



PN: 50975  
4 Compartment



PN: 51998  
Adjustable