



Narrow Clear Dual Dispensing Paper Towel Holder

Part No. 51937

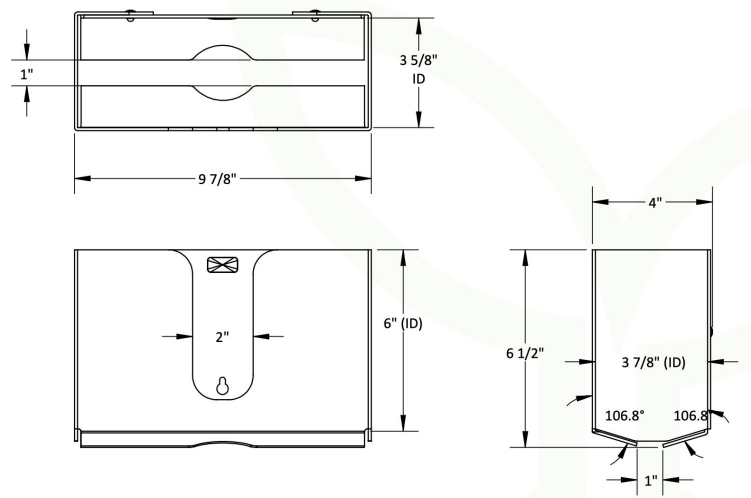
Designed for compact clinical and lab spaces where visibility and hygiene are key, this narrow clear dual-dispensing paper towel holder offers fast top or bottom access and a fully transparent shatter-proof body—so you can always see towel levels and condition at a glance, helping your team stay efficient and contamination-free.

9 7/8" x 6 1/2" x 4 1/2" inches WHD



Features:

- Rectangular with Angled Slot for Bottom Dispensing and Open Top
- Dual Access to Paper Towels
- Constructed from Shatterproof Clear PETG
- Protects paper towels keeping them clean, dry and neat
- Holds 150 count single stack of Z, C or multifold paper towels



Corrosion Resistant



Short Lead Times



Ships Assembled



Made in the U.S.A



100% Lifetime Guarantee