



# MRI Core DX with Sliding Door

51728

## Mobilized Storage & Organization for MRI Suites

Mobilize your MRI Suite with the MRI Core DX. This cart contains ample amount of drawer and storage space for anything you need to help treat your patient. Utilize the side shelves for quick access to essential gloves or wipes and customize your drawer space to match your needs.

## MR Conditional Construction

- Built for safety within a 3 Tesla level MRI environment.

## Side Wing Storage

- 6 Side Wings, 2 dispensing for gloves or wipes and 2 enclosed to hold any quick access supplies.

## Easy to Grip Handles

- Built in handles on either side of the cart for efficient and smooth movement around corners and packed hallways.

## LIFETIME GUARANTEE

- Work stress-free, knowing your cart is covered for life.

## [ASK ABOUT OUR DEMO PROGRAM](#)

[Try it out at your facility.](#)



### Sliding Door

- Secure items in the bulk storage area with the sliding door.



### Spacious Drawers

- Three drawers that each measure 11 1/2" wide by 15 1/4" deep by 3 3/8" tall.



### Dispensing Shelf

- Easily access gloves, kimwipes or other supplies.



### Easy-Grab Handles

- Ergonomic, lightweight, and easy to maneuver.



10991 N Airworld Drive, Kansas City, MO, USA | 1 (800) 874-7768 | [Sales@TrippNT.com](mailto:Sales@TrippNT.com)

# MRI Core DX with Sliding Door

51728

## Secure Sliding Door For Bulk Storage

- Larger supplies kept safely behind a sliding door, keeping shared environments and workflows uncluttered.

## Corrosion Resistant

- HDPE plastic build allows this cart to be easy to clean and non corrosive to many harsh acids and chemicals



Corrosion Resistant



Short Lead Times



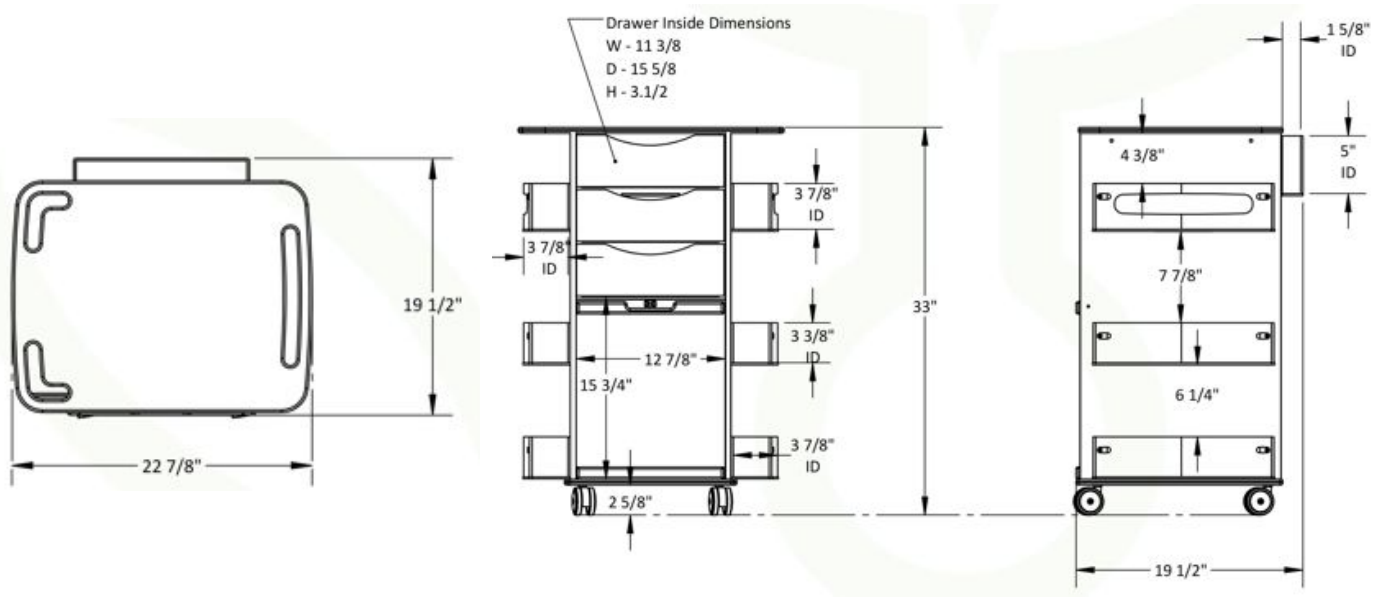
Ships Assembled



Made in the U.S.A



100% Lifetime Guarantee



## ACCESSORIES



PN: 50917  
4 Compartment



PN: 50974  
6 Compartment



PN: 50975  
4 Compartment



PN: 51998  
Adjustable