



## Single Two Faced Glove Box

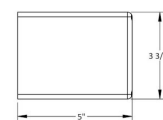
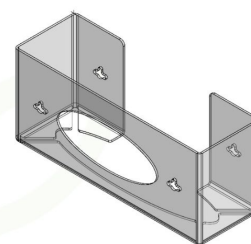
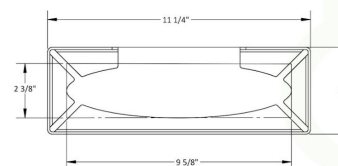
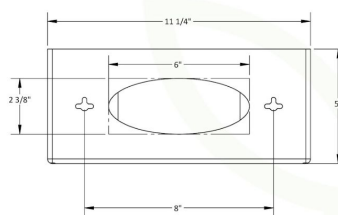
Part No. 51141

Keep your lab running efficiently from both sides of the bench with the TrippNT Two-Faced Single Glove Box Holder. Designed for lab managers overseeing high-traffic or shared environments, this dual-access dispenser allows glove retrieval from either side of a pass-through wall, bench divider, or partition—ensuring seamless workflow and compliance. Built from crystal-clear, durable PETG, it offers excellent visibility, long-term durability, and a clean, professional look that complements any lab space.

11 1/4 x 5 x 3 3/4 inches WHD

### Features:

- Holds one standard glove box for streamlined organization
- Impact-resistant, crystal-clear PETG ensures lasting strength and clarity
- Smooth, nonporous surface cleans easily with standard lab disinfectants



**Corrosion Resistant**



**Short Lead Times**



**Ships Assembled**



**Made in the U.S.A**



**100% Lifetime Guarantee**