



5 Compartment Pipette Bin with Magnet Mount

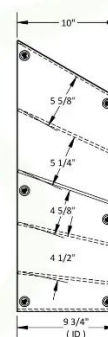
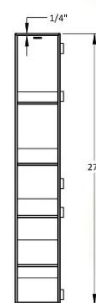
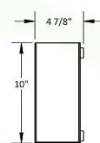
Part No. 50869

Keep your pipettes visible, protected, and exactly where you need them. This PVC bin features five angled compartments and strong repositionable neodymium magnets, giving you flexible mounting options on metal surfaces. Designed to enhance organization and accessibility, it is ideal for fume hoods, biosafety cabinets, and metal lab walls.

4 3/4 x 27 x 10 inches WHD

Features:

- **Dual-Sided Mounting:** Magnets can be moved to either side to fit your space
- **No Installation Needed:** Mounts to most metal surfaces with strong, scratch-resistant magnets
- **Perfect for Shared Stations:** Keeps serological pipettes organized and off crowded work surfaces
- **Sturdy PVC Build:** Durable and easy to clean



Corrosion Resistant



Short Lead Times



Ships Assembled



Made in the U.S.A



100% Lifetime Guarantee