



Small Kimwipe Holder Magnet Mount

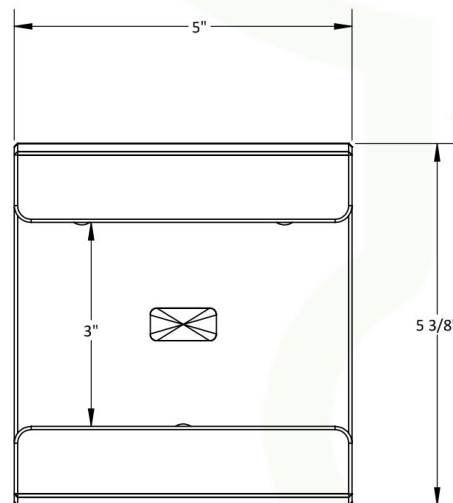
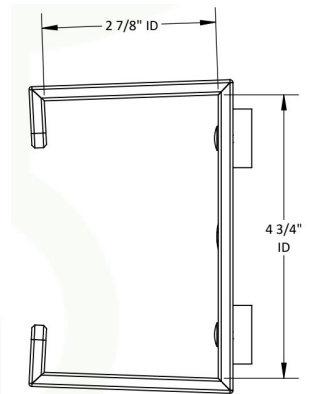
Part No. 50653

Magnet-mount Kimwipe holder frees bench space, secures your box to any metal surface, and ensures wipes are always within reach—helping you keep workflow streamlined, compliant, and interruption-free

5 x 5 $\frac{3}{8}$ x 3 $\frac{7}{8}$ inches WHD

Features:

- Scratch free magnet design
- Fits Kimwipes Kimberly Clark XL Wipers Part No. 34155, Accuwipe Part No. 29712 and Shur Wipe Wipers Part No. 29712
- White PVC Construction with Magnet Back
- Provides a Lean Approach to Cleaning Laboratory and Manufacturing Supplies.



Corrosion Resistant



Short Lead Times



Ships Assembled



Made in the U.S.A



100% Lifetime Guarantee