



## Triple ABS Bottle Holder 1000 mL

Part No. 50411

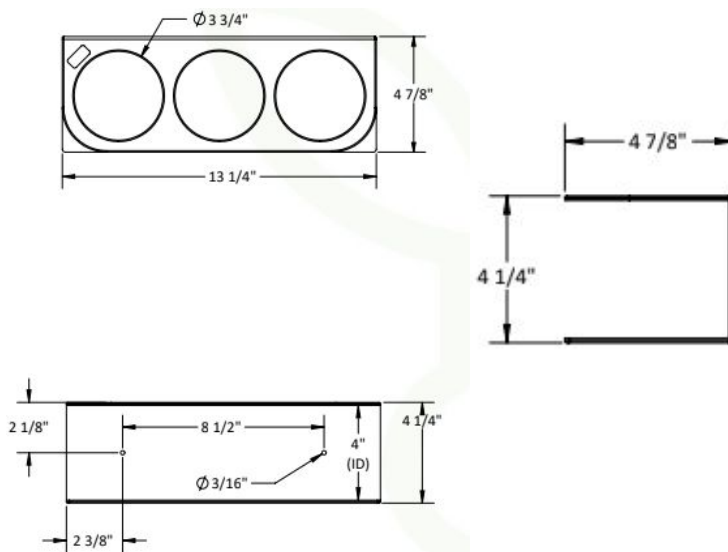
In busy labs, cluttered benches and unstable solvent bottles can create hazards and disrupt workflow. This wall-mounted ABS bottle holder gives you back your space while keeping 1 L bottles upright and accessible. Its open design accommodates low-volume bottles and reduces fume exposure from tipped containers.

13 ¼ x 4 ¼ x 4 7/8 inches WHD



### Features:

- Holds three 1000 mL bottles in 3 ¾ diameter circle slots
- Mounts directly to the wall to free up crowded benchtop space
- Open top and front provide easy access to bottles at all times
- Durable and chemical-resistant easy to clean with standard disinfectants



**Corrosion Resistant**



**Short Lead Times**



**Ships Assembled**



**Made in the U.S.A**



**100% Lifetime Guarantee**

