



Pipette 4 Bin Compartment

Part No. 50272

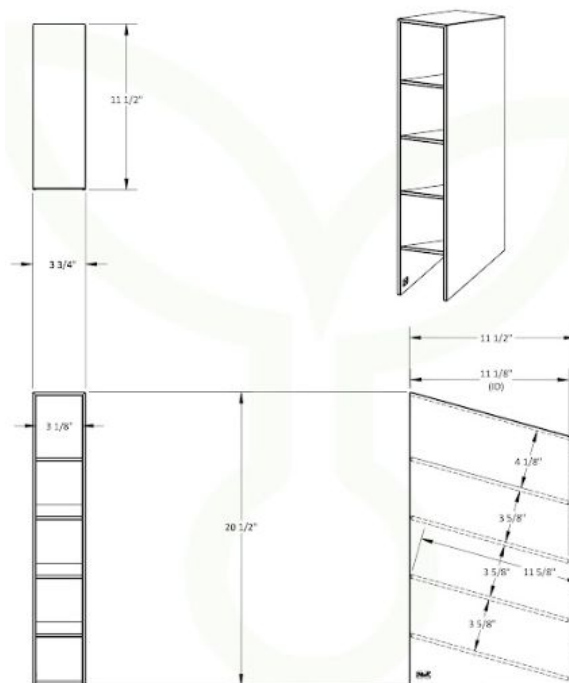
Streamline your pipette workflow with this angled, benchtop, or hood free-standing bin. With four open compartments and a sloped design, it keeps frequently used pipettes within reach while reducing contamination risk. Made from durable, cleanable PVC, this storage solution helps lab managers maintain order and efficiency in even the busiest workspaces.

3 ¾ x 20 ½ x 11 ½ inches WHD



Features:

- **Angled for Visibility:** 4 sloped compartments allow for quick identification and grab-and-go access
- **Standing Version:** Place on your bench, hood, or BSC for point-of-use organization
- **Durable PVC Construction:** Resistant to chemicals, wear, and daily use
- **Efficient Workflow:** Keeps instruments upright, separated, and ready for action



Corrosion Resistant



Short Lead Times



Ships Assembled



Made in the U.S.A



100% Lifetime Guarantee

