

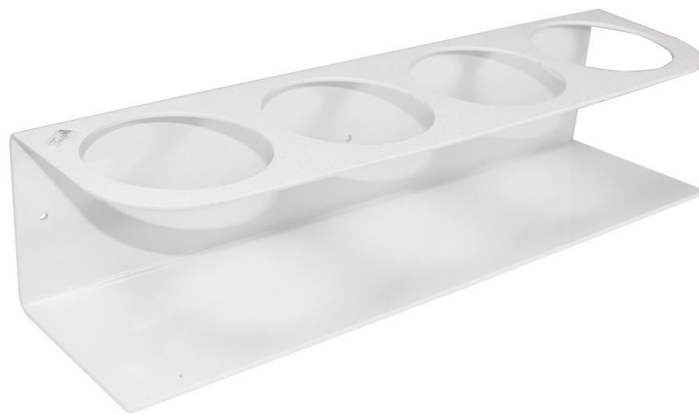


Quadruple ABS Bottle Holder 1000 mL

Part No. 50189

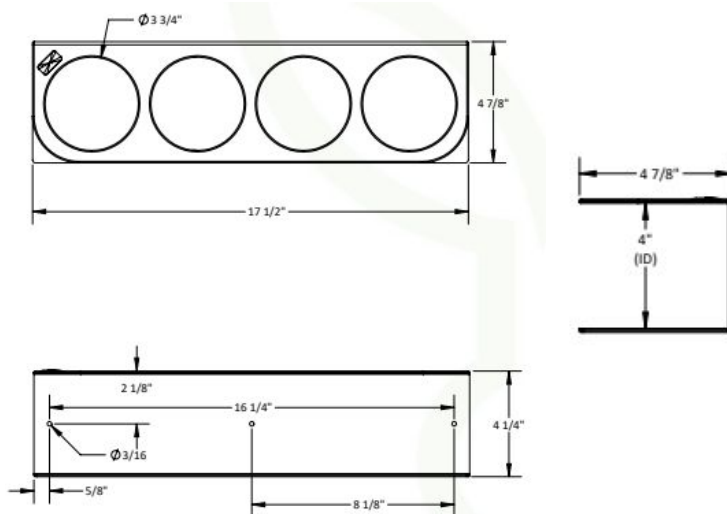
In busy labs, cluttered benches and unstable solvent bottles can create hazards and disrupt workflow. This wall-mounted ABS bottle holder gives you back your space while keeping 1 L bottles upright and accessible. Its open design accommodates low-volume bottles and reduces fume exposure from tipped containers.

17 1/2" x 4 1/4" x 4 7/8" inches WHD



Features:

- Holds four 1000 mL bottles in 3 3/4" diameter circle slots
- Mounts directly to the wall to free up crowded benchtop space
- Open top and front provide easy access to bottles at all times
- Durable and chemical-resistant easy to clean with standard disinfectants



Corrosion Resistant



Short Lead Times



Ships Assembled



Made in the U.S.A



100% Lifetime Guarantee

